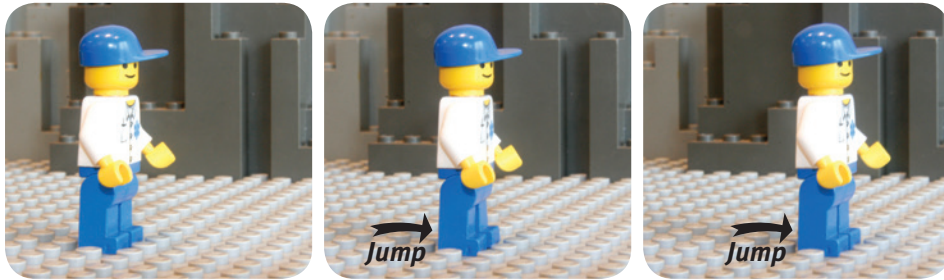


The fastest and easiest way to move a LEGO® minifigure is to jump forward one row at a time. The result looks more like a glide than a walk, more suitable for a robot. Depending on the walking pace, press 2, 3 or 4 to take multiple pictures in each position.



Actual step-by-step walking

You can make LEGO minifigures actually appear to walk. It takes eight steps for a complete movement of left and right legs:

- 1 Start with the LEGO figure standing still with both legs straight
- 2 Push the figure away from you and swing the closest leg forward. Stand the figure up again with the closest leg angled forward
- 3 Rock the figure forward so that it is between rows on the base board – standing on the heel of the front foot, and toe of the back foot. Straighten its back so that the figure is standing tall



- 4 Rock the figure forward again so that its closest leg is firmly connected to the next row on the base board. The back leg is angled back
- 5 Pull the figure towards you and swing the back leg forward so that it is standing upright again – ONE step completed

- 6 Pull the figure towards you and swing the furthest away leg forward. Stand the figure again



- 7 Rock the figure forward so that it is between rows on the base board – standing on the heel of the front foot and toe of the back foot. Straighten its back so that it is standing tall
- 8 Rock the figure forward again so that the furthest away leg is firmly connected to the next row on the base board. The closest leg is angled back
- 9 Push the figure away from you and swing the closest leg forward so that it is standing upright again and you're back into position 1 – a full cycle of TWO steps completed.



LEGO minifigure walk - advanced options

- With each step you can also move the figure's arms. Swing them in time with the opposite leg
- Move the head. This action may not be rhythmic but might be related to what the figure is looking at as it walks by
- Bend the figure forward at the hips and it will look like it is running

